

HAKONE FREEPASS A Convenient, Value-priced Excursion Ticket

● Round-trip travel on the Odakyu Line + unlimited use of 8 Hakone-area transportation modes!

- ① Hakone Tozan Train ② Hakone Tozan Cable Car ③ Hakone Tozan Bus
- ④ "KANKO SHISETSU-MEGURI" Bus (Hakone Tozan Bus) ⑤ Hakone Sightseeing Cruise
- ⑥ Hakone Ropeway ⑦ Odakyu Highway Bus ⑧ Tokai Bus

*Unlimited use of ③, ⑦ and ⑧ only within designated zones shown on map. *Cannot be used on transport other than ① to ⑧ or on scheduled sightseeing buses. *For ⑦, passengers with reserved seats have priority. No boarding if all seats are occupied. *Additional fare required if boarding outside of or traveling beyond designated zones. *Transportation services may be cancelled in case of bad weather. If service has been cancelled, you may apply for a refund at the station where you end your trip, but only for unused modes of transportation.

- Does not include the Limited Express Romancecar surcharge. Please buy a limited express ticket if you use the Romancecar.
- Good for only one round-trip from the departure station to Odawara and back.
- The Hakone Freepass (including those valid for multiple days) cannot be used after returning to your departure station.
- The Hakone Freepass can be purchased starting one month prior to the date of travel.
- Showing your Hakone Freepass entitles you to special discounts or other benefits at designated facilities in the Hakone area.

●小田急線往復+箱根エリアの8つの乗り物が乗り降り自由!
①箱根登山線②箱根登山ケーブルカー③箱根登山バス④観光施設めぐりバス(箱根登山バス)⑤箱根海賊船⑥箱根ロープウェイ⑦小田急ハイウェイバス⑧東海バス

※③⑦⑧は地図に表示された指定区間内のみ乗り降り自由です。※①～⑥以外の乗り物や定期観光バスにはご乗車できません。※⑦は指定乗車券をお持ちの方が優先となり、満席の場合はご乗車できません。※指定区間外での乗車、乗り越しの場合は、その分の運賃をお支払いください。※悪天候等により、運休になることがあります。また、運休により乗車できなかった乗り物については、旅行終了駅にて払戻をいたします。(ただし、その乗り物を一度も乗車していない場合に限りです)
●特急ロマンスカーの料金は含まれません。ご利用には別途、特急券をご購入ください。●発駅から小田原駅の区間は、1往復しかできません。
●2日間有効でも、3日間有効でも、発駅に戻ったらバスは回収され、それ以上使用できなくなります。●箱根フリーパスは乗車日の1ヶ月前から購入できます。
●箱根フリーパスのご提示で、指定された箱根エリアの複数の施設で割引などの優待が受けられます。



Visit Hakone by Romancecar

- The Romancecar has reserved seating only, and is fast and comfortable!
- Additional limited express surcharge required for Romancecar.



If you have the Hakone Freepass from Shinjuku, only the additional limited express surcharge of 1,200 yen is required.

Discounted excursion ticket Hakone Freepass, 6,100 yen from Shinjuku* + 1,200 yen (one way) for Romancecar limited express surcharge between Shinjuku and Hakone-Yumoto

*For a Hakone Freepass starting elsewhere than Shinjuku: for example, with a Hakone Freepass from Odawara, traveling one-way by Romancecar between Shinjuku and Hakone-Yumoto takes a normal fare of 910 yen plus 1,200 yen for the limited express surcharge. *You can save 50 yen if you use the online service (e-Romancecar) to purchase your electronic limited express ticket.

Use the e-Romancecar webpage to buy the Limited Express ticket at any time or place!

- Possible to buy from either smartphone or PC
- No need to register membership number ● Pay by credit card



For more information, see Odakyu Electric Railway website <https://www.web-odakyu.com/e-romancecar> *e-Romancecar is available in English, Chinese (traditional and simplified), and Korean.

Odakyu Sightseeing Service Center

The Odakyu Sightseeing Service Center can provide tourist information about areas located near the Odakyu Line.



Odakyu Sightseeing Service Center, Shinjuku West
8:00 - 16:00
TEL 03-5909-0211



Odakyu Sightseeing Service Center, Odawara
8:30 - 16:30
TEL 0465-20-2266

<https://www.odakyu.jp/english/support/center/>

HAKONE FREEPASS

Travel to Hakone on Odakyu

Hakone is one of Japan's best-known tourist areas, where visitors can enjoy history, culture and the beauty of nature throughout the year. Enjoy a convenient, money-saving trip with Odakyu's Hakone Freepass.

Save money with unlimited travel on 8 different forms of transportation!



Valid for 2 days	Adults	Children (6 - 11)
From Shinjuku	6,100 Yen	1,100 Yen
From Odawara	5,000 Yen	1,000 Yen

Valid for 3 days	Adults	Children (6 - 11)
From Shinjuku	6,500 Yen	1,350 Yen
From Odawara	5,400 Yen	1,250 Yen

*These are sample fares. Actual fare varies depending on Odakyu Line originating station.

- The Hakone Freepass can be purchased starting one month prior to the date of travel at all Odakyu Line stations.
- The Hakone Freepass does not include limited express surcharges.
- The Hakone Freepass and Romancecar limited express tickets can be purchased at any Odakyu Line station, Odakyu Travel office, or Odakyu Sightseeing Service Center.

● Instagram: @odakyu_global
https://www.instagram.com/odakyu_global/

● Official Website
<https://www.odakyu.jp/english/passess/hakone/>

*Depending on the season and weather conditions, the views may look different from the photographs in this pamphlet. The information presented in this pamphlet was correct as of April 1st, 2023.

★ indicates some of the facilities at which the Hakone Freepass can be used to obtain special benefits.
 ● on bus route indicates a bus stop. (Some stops omitted from map.)

● indicates a famous site.
 ☆☆☆☆ indicates famous flower or foliage spots.

MAP-1

Free shuttle bus to Gotemba Premium Outlets®

GOTEMBA Sta. (Hakone Otome-Exit) 568

GOTEMBA Sta. (Fujisan Exit) 571

GOTEMBA Sta. 御殿場駅

GOTEMBA PREMIUM OUTLETS®

HOTEL CLAD, Konohana no yu *Some buses stop here.

Otome-toge

Mt. Kintoki

Hakone Tozan Bus G

Hakone Tozan Bus "KANKO SHISETSU-MEGURI" Bus S

Hakone Tozan Bus "KANKO SHISETSU-MEGURI" Bus M

Odakyu Highway Bus W

FUJIMI CAFE

Tomei-Gotemba

Direction of Mt. Fuji

Hakone Freepass Offers Unlimited Travel in the Area



Hakone Tozan Train



Hakone Tozan Cable Car



Hakone Ropeway



Hakone Sightseeing Cruise

T Togendai Line

TP Togendai Line (For Pola bijutsukan)

H Hakonemachi Line

L Hakone-Yumoto/Outlets Line

G Gotemba Line

K Hakone Kyukaido Line

R Hakone Shindo Line

TG Togendai Gora Line

"KANKO SHISETSU-MEGURI" Bus (Tourist Attraction Sightseeing Bus) (Hakone Tozan Bus)

S Via Pola bijutsukan

M Via Miyagino

W Odakyu Highway Bus (designated areas)

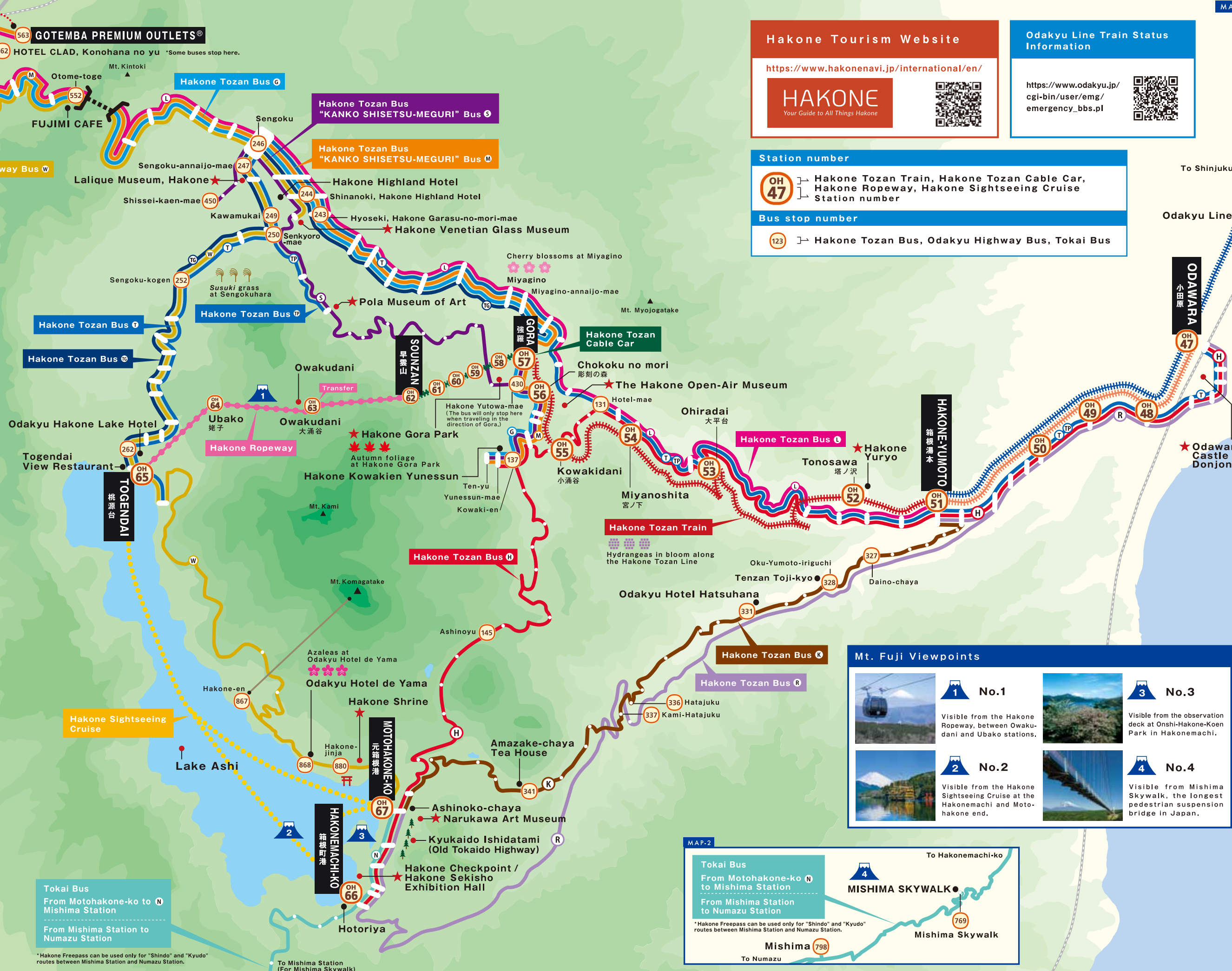
N Tokai Bus (designated areas)

N Shinjuku Hakone Line

N Mishima Line

Please note that the fare for travel between Shinjuku and Gotemba is not included in the price.

Please note that the Hakone Freepass cannot be used on Izu-Hakone Bus services.



Hakone Tourism Website


<https://www.hakonenavi.jp/international/en/>

HAKONE
Your Guide to All Things Hakone



Odakyu Line Train Status Information

https://www.odakyu.jp/cgi-bin/user/emg/emergency_bbs.pl




Station number

OH 47 } Hakone Tozan Train, Hakone Tozan Cable Car, Hakone Ropeway, Hakone Sightseeing Cruise Station number

Bus stop number


123 } Hakone Tozan Bus, Odakyu Highway Bus, Tokai Bus

Mt. Fuji Viewpoints




1 No.1

Visible from the Hakone Ropeway, between Owakudani and Ubako stations.




2 No.2

Visible from the Hakone Sightseeing Cruise at the Hakonemachi and Motohakone end.



3 No.3

Visible from the observation deck at Onshi-Hakone-Koen Park in Hakonemachi.



4 No.4

Visible from Mishima Skywalk, the longest pedestrian suspension bridge in Japan.

MAP-2

Tokai Bus

From Motohakone-ko **N** to Mishima Station

From Mishima Station to Numazu Station

MISHIMA SKYWALK

Mishima 798

To Numazu

To Hakonemachi-ko

*Hakone Freepass can be used only for "Shindo" and "Kyudo" routes between Mishima Station and Numazu Station.

Tokai Bus

From Motohakone-ko to **N** Mishima Station

From Mishima Station to Numazu Station

*Hakone Freepass can be used only for "Shindo" and "Kyudo" routes between Mishima Station and Numazu Station.